

## Group Profile Screen Painting Elements

The Group Profile screen can have elements painted in the Header (Red), Details (Green), and Button (Yellow) portions of the screen. See below for all of the possible elements.

In any field that is setup as a multi-select field, if a manual entry does not match any of the configured values, then the multi-select list of values for the field is displayed.

### Header & Footer Information

<i>Element</i>	<i>Type</i>	<i>Default Prompt Field Name</i>	<i>Comment</i>
Fields and information can't be modified in this section.			

### Details

<i>Element</i>	<i>Type</i>	<i>Default Prompt Field Name</i>	<i>Comment</i>
ACCOUNT_TYPE	TEXT ITEM	ACCOUNT TYPE	
ACCOUNT_TYPE_IB	BUTTON		
ACCT_CONTACT	TEXT ITEM	ACCT. CONTACT	
ADDR_CLEANSSED_STATUS	CHECKBOX		
ADDR_LANGUAGE_CODE	TEXT ITEM	ADDR. LANGUAGE	
ADDR_LANGUAGE_CODE_IB	BUTTON		
ADDRESS	TEXT ITEM	ADDRESS	
ADDRESS_IB	BUTTON		
ADDRESS_INFO	DISPLAY_ITEM	ADDRESS INFORMATION	
ADDRESS_TYPE	DISPLAY_ITEM		
ADDRESS_TYPE_DESC	DISPLAY_ITEM		
ADDRESS2	TEXT ITEM		
ADDRESS3	TEXT ITEM		
ADDRESS4	TEXT ITEM		
AR_NO_CENTRAL	TEXT ITEM	CENTRAL A/R NO.	
AR_NO_G	TEXT ITEM		
AR_NO_G_IB	BUTTON		
AUTO_FOLIO_SETTLEMENT_TYPE	TEXT ITEM	AUTO FOLIO SETTLEMENT TYPE	
AUTO_FOLIO_SETTLEMENT_TYPE_IB	BUTTON		
BIRTH_COUNTRY	TEXT ITEM		
BIRTH_COUNTRY_IB	BUTTON		
BIRTH_PLACE	TEXT ITEM		
BL_MSG	TEXT ITEM	RULE	
CBL_IND	CHECKBOX	RESTRICTED	

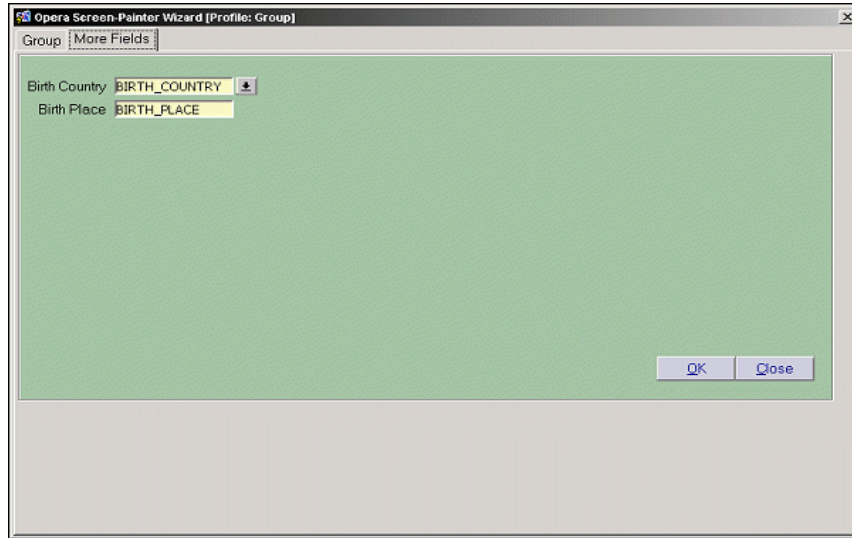
CITY	TEXT ITEM	CITY	
CITY_EXT	TEXT ITEM	EXT.	
COMM1_TYPE	TEXT ITEM		
COMM1_TYPE_IB	BUTTON		
COMM1_VALUE	TEXT ITEM		
COMM1_VALUE_IB	BUTTON		
COMM2_TYPE	TEXT ITEM		
COMM2_TYPE_IB	BUTTON		
COMM2_VALUE	TEXT ITEM		
COMM2_VALUE_IB	BUTTON		
COMM3_TYPE	TEXT ITEM		
COMM3_TYPE_IB	BUTTON		
COMM3_VALUE	TEXT ITEM		
COMM3_VALUE_IB	BUTTON		
COMMENTS	TEXT ITEM	NOTES	
COMMENTS_IB	BUTTON		
COMUNICATION_INFO	DISPLAY_ITEM	COMMUNICATIONS	
COUNTRY_CODE	TEXT ITEM	COUNTRY	
COUNTRY_CODE_IB	BUTTON		
CREDIT_RATING	TEXT ITEM	CREDIT RATING	
CREDIT_RATING_IB	BUTTON		
CRS_NAMEID	TEXT ITEM	CRS ID	
DISTRICT	DISPLAY_ITEM	DISTRICT	District associated with the address.
GROU_BIRTH_COUNTRY_LABEL	DISPLAY_ITEM		
GROU_BIRTH_PLACE_LABEL	DISPLAY_ITEM		
GROU_GENDER_LABEL	DISPLAY_ITEM		
GROU_ID_COUNTRY_LABEL	DISPLAY_ITEM		
GROU_ID_DATE_LABEL	DISPLAY_ITEM		
GROU_ID_NUMBER_LABEL	DISPLAY_ITEM		
GROU_ID_PLACE_LABEL	DISPLAY_ITEM		
GROU_ID_TYPE_LABEL	DISPLAY_ITEM		
GROU_NAME_TAX_TYPE_LABEL	DISPLAY_ITEM		
GROU_PROFESSION_LABEL	DISPLAY_ITEM		
GROU_TAX1_NO_LABEL	DISPLAY_ITEM		
GROU_TAX2_NO_LABEL	DISPLAY_ITEM		
GUEST_TYPE	TEXT ITEM		
IATA_CORP_ID	DISPLAY_ITEM		
ID_COUNTRY	TEXT ITEM		
ID_COUNTRY_IB	BUTTON		
ID_DATE	TEXT ITEM		
ID_DATE_IB	BUTTON		
ID_NUMBER	TEXT ITEM		When the Profiles>Passport/ID Number View permission is not granted to the user, then the passport number will be masked with X's except for the last 2 digits.
ID_PLACE	TEXT ITEM		
ID_TYPE	TEXT ITEM		
ID_TYPE_IB	BUTTON		
ID_TYPE_EDIT_IB	BUTTON		Selecting this ellipsis button displays the ID Information screen where multiple types of identification details and scanned images can be added, edited, or deleted.
INDUSTRY_CODE	TEXT ITEM	INDUSTRY CODE	
INDUSTRY_CODE_IB	BUTTON		
INTERNAL_INFO	DISPLAY_ITEM	INTERNAL INFORMATION	
LABEL 1 - LABEL 100	DISPLAY_ITEM		
LANGUAGE_CODE	TEXT ITEM	LANGUAGE	
LANGUAGE_CODE_IB	BUTTON		
LAST_NAME	TEXT ITEM	GROUP NAME	
LEGAL_COMPANY	TEXT ITEM	LEGAL COMPANY	
NAME_TAX_TYPE	TEXT ITEM		
NAME_TAX_TYPE_IB	BUTTON		
NATIONALITY_CODE	TEXT ITEM	NATIONALITY	
NATIONALITY_CODE_IB	BUTTON		
PASSPORT	TEXT ITEM	PASSPORT	When the Profiles>Passport/ID Number View permission is not granted to the user, then the passport number will be masked with X's except for the last 2 digits.
PAYMENT_DUE_DAYS	TEXT ITEM	PMT. DUE DAYS	

			When the down arrow button is displayed, then values are available for selection and have been configured in the <b>Configuration&gt;Setup&gt;Screen Design&gt;List of Values Maintenance&gt;LOV Value Maintenance</b> menu option and in the PAY DAYS LOV Group.
PAYMENT_DUE_DAYS_IB	BUTTON		
POSTAL_CODE	TEXT ITEM	POSTAL CD.	
PROFESSION	TEXT ITEM		
PROTECTED	LIST	PROTECTED	
REPLACE_ADDRESS	CHECKBOX	REPLACE ADDRESS	
SAVE_IN_HISTORY	CHECKBOX	HISTORY	
STATE_CODE	TEXT ITEM	STATE	
STATE_CODE_IB	BUTTON		
SUMM_REF_CC	TEXT ITEM	REF. CURR.	
SUMM_REF_CC_IB	BUTTON		
TAX_CATEGORY	TEXT ITEM	TAX CATEGORY	
TAX_CATEGORY_IB	BUTTON		
TAX_OFFICE	TEXT ITEM	TAX OFFICE	
TAX_OFFICE_IB	BUTTON		
TAX_PERC1	TEXT ITEM		
TAX_PERC2	TEXT ITEM		
TAX_PERC3	TEXT ITEM		
TAX_PERC4	TEXT ITEM		
TAX_PERC5	TEXT ITEM		
TAX_TYPE	TEXT ITEM		
TAX_TYPE_IB	BUTTON		
TAX1_NO	TEXT ITEM		
TAX2_NO	TEXT ITEM		
UDFC01 – UDFC40	TEXT ITEM		
UDFC01_IB – UDFC40_IB	BUTTON		
UDFD01 – UDFD20	TEXT ITEM		
UDFD01_IB – UDFD05_IB	BUTTON		
UDFN01_IB – UDFN40_IB	BUTTON		
URL_BUTTON1	BUTTON		When the object is screen painted on the form, a URL address will need to be entered in the URL field on the button Properties form. When the button is clicked on, the user will be taken to the URL address that was configured for the button. If a URL is not configured for the button and the button is clicked on, nothing will happen.
URL_BUTTON2	BUTTON		When the object is screen painted on the form, a URL address will need to be entered in the URL field on the button Properties form. When the button is clicked on, the user will be taken to the URL address that was configured for the button. If a URL is not configured for the button and the button is clicked on, nothing will happen.
VIP_CODE	TEXT ITEM	VIP	
VIP_CODE_IB	BUTTON		
XBYTE_DISPLAY	TEXT ITEM		
XLANGUAGE	TEXT ITEM	ALT. LANGUAGE	
XLANGUAGE_IB	BUTTON		
XNAME	TEXT ITEM	ALT. NAME	Enter or displays the alternate last name for the profile. When the General>Alternate Name application function and the General>Auto Alternate Name Translate application parameter are set to Y, the cursor is automatically in this field when the Profile screen opens.

<b>Buttons</b>			
<i>Element</i>	<i>Type</i>	<i>Default Prompt Field Name</i>	<i>Comment</i>
CLOSE	BUTTON		
NEW	BUTTON		
OPTIONS	BUTTON		
SAVE	BUTTON		
SEARCH	BUTTON		
SELECT	BUTTON		



## Group Profile More Fields Screen Painting Elements



In any field that is setup as a multi-select field, if a manual entry does not match any of the configured values, then the multi-select list of values for the field is displayed.

More Fields Details			
Element	Type	Default Prompt Field Name	Comment
AUTO_FOLIO_SETTLEMENT_TYPE	TEXT ITEM	AUTO FOLIO SETTLEMENT TYPE	This field is checked for the auto folio settlement type that is attached to the profile for the reservation and the auto folio settlement type attached to each Billing Window, i.e. routing instructions.
AUTO_FOLIO_SETTLEMENT_TYPE_IB	BUTTON		
AUTOENROLL_MEMBER_YN	CHECKBOX	AUTO ENROLL IN THE LOYALTY PROGRAM	
BIRTH_COUNTRY	TEXT ITEM	BIRTH COUNTRY	
BIRTH_COUNTRY_IB	BUTTON		
BIRTH_PLACE	TEXT ITEM	BIRTH PLACE	
BL_MSG_MORE	TEXT ITEM	RULE	
CBL_IND_MORE	CHECKBOX	RESTRICTED	
CLOSE	BUTTON		
EMAIL_YN	CHECKBOX	ALLOW EMAIL	
GENDER	TEXT ITEM	GENDER	
GENDER_IB	BUTTON		
GUEST_PRIV_YN	CHECKBOX	GUEST PRIVACY	
GUEST_TYPE	TEXT ITEM	GUEST TYPE	
GUEST_TYPE_IB	BUTTON		
ID_COUNTRY	TEXT ITEM	ID ISSUED COUNTRY	
ID_COUNTRY_IB	BUTTON		
ID_DATE	TEXT ITEM	ID ISSUED DATE	
ID_DATE_IB	BUTTON		
ID_NUMBER	TEXT ITEM	ID NUMBER	When the Profiles>Passport/ID Number View permission is not granted to the user, then the passport number will be masked with X's except for the last 2 digits.
ID_PLACE	TEXT ITEM	ID ISSUED PLACE	
ID_TYPE	TEXT ITEM	ID TYPE	
ID_TYPE_IB	BUTTON		
ID_TYPE_EDIT_IB	BUTTON		Selecting this ellipsis button displays the ID Information screen where multiple types of identification details and scanned images can be added, edited, or deleted.

LABEL 1 - LABEL 100	DISPLAY ITEM		
LEGAL_COMPANY	TEXT ITEM	LEGAL COMPANY	
MAILING_LIST	CHECKBOX	MAILING LIST	
MARKET_RESEARCH_YN	CHECKBOX	PARTICIPATE IN MARKET RESEARCH	
MARKETS	TEXT ITEM	BUSINESS SEGMENT	
MARKETS_IB	BUTTON		
NAME_TAX_TYPE	TEXT ITEM	TAX TYPE	
NAME_TAX_TYPE_IB	BUTTON		
NATIONALITY_CODE	TEXT ITEM	NATIONALITY	
NATIONALITY_CODE_IB	BUTTON		
OK	BUTTON		
PASSPORT	TEXT ITEM	PASSPORT	When the Profiles>Passport/ID Number View permission is not granted to the user, then the passport number will be masked with X's except for the last 2 digits.
PAYMENT_DUE_DAYS	TEXT ITEM	PMT. DUE DAYS	
PAYMENT_DUE_DAYS_IB	BUTTON		When the down arrow button is displayed, then values are available for selection and have been configured in the <b>Confiuration&gt;Setup&gt;Screen Design&gt;List of Values Maintenance&gt;LOV Value Maintenance</b> menu option and in the PAY DAYS LOV Group.
PHONE_YN	BUTTON	ALLOW PHONE	
PREFERRED_ROOM_NO	TEXT ITEM	PREFERRED ROOM	
PROFESSION	TEXT ITEM	PROFESSION	
PROTECTED	LIST	PROTECTED	
SMS_YN	CHECKBOX	ALLOW SMS	
TAX_CATEGORY	TEXT ITEM	TAX CATEGORY	
TAX_CATEGORY_IB	BUTTON		
TAX_OFFICE	TEXT ITEM	TAX OFFICE	
TAX_OFFICE_IB	BUTTON		
TAX_PERC1	TEXT ITEM	TAX PERC1	
TAX_PERC2	TEXT ITEM	TAX PERC2	
TAX_PERC3	TEXT ITEM	TAX PERC3	
TAX_PERC4	TEXT ITEM	TAX PERC4	
TAX_PERC5	TEXT ITEM	TAX PERC5	
TAX_TYPE	TEXT ITEM	TAX TYPE	
TAX_TYPE_IB	BUTTON		
TAX1_NO	TEXT ITEM		
TAX2_NO	TEXT ITEM		
THIRD_PARTY_YN	CHECKBOX	RECEIVE INFORMAITON FROM THIRD PARTIES	
UDFC01 – UDFC40	TEXT ITEM		
UDFC01_IB – UDFC40_IB	BUTTON		
UDFD01 – UDFD20	TEXT ITEM		
UDFD01_IB – UDFD05_IB	BUTTON		
UDFN01 – UDFN40	TEXT ITEM		
UDFN01_IB – UDFN40_IB	BUTTON		
URL_BUTTON1	BUTTON		When the object is screen painted on the form, a URL address will need to be entered in the URL field on the button Properties form. When the button is clicked on, the user will be taken to the URL address that was configured for the button. If a URL is not configured for the button and the button is clicked on, nothing will happen.
URL_BUTTON2	BUTTON		When the object is screen painted on the form, a URL address will need to be entered in the URL field on the button Properties form. When the button is clicked on, the user will be taken to the URL address that was configured for the button. If a URL is not configured for the button and the button is clicked on, nothing will happen.